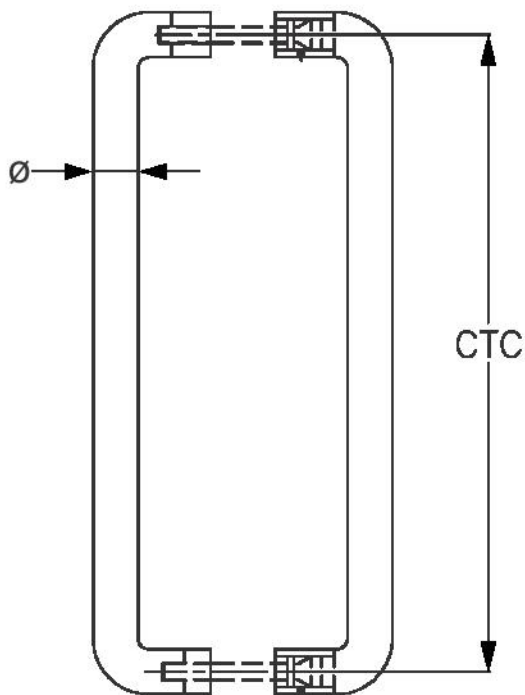


Pull Handle

DORMA XL - C®

D - Type



Centre to Centre (CTC) : 150 mm
 Diameter (ø) : 19 mm
 Grade : SS 304
 Finish : Satin Stainless Steel

Ordering Code : XL - C 3001A

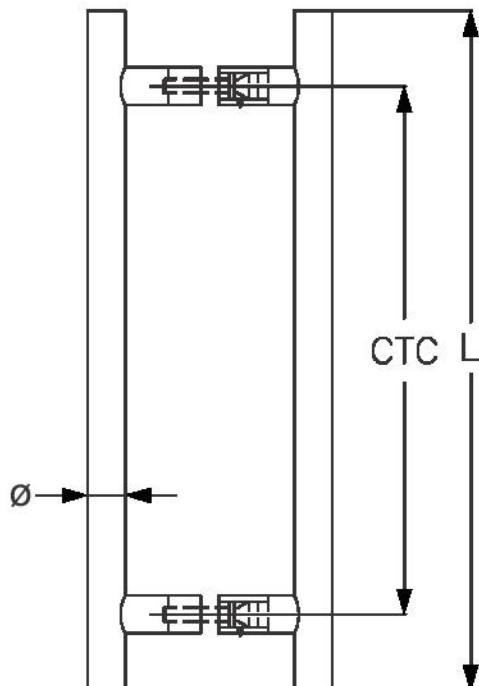
Reference Code : 9127324

Centre to Centre (CTC) : 300 mm
 Diameter (ø) : 22 mm
 Grade : SS 304
 Finish : Satin Stainless Steel

Ordering Code : XL - C 3002A

Reference Code : 9127354

H - Type



Length (L) : 400 mm
 Centre to Centre (CTC) : 300 mm
 Diameter (ø) : 22 mm
 Grade : SS 304
 Finish : Satin Stainless Steel

Ordering Code : XL - C 3000A

Reference Code : 9125521

Length (L) : 450 mm
 Centre to Centre (CTC) : 350 mm
 Diameter (ø) : 25 mm
 Grade : SS 304
 Finish : Satin Stainless Steel

Ordering Code : XL - C 3003A

Reference Code : 9127327

Length (L) : 600 mm
 Centre to Centre (CTC) : 500 mm
 Diameter (ø) : 32 mm
 Grade : SS 304
 Finish : Satin Stainless Steel

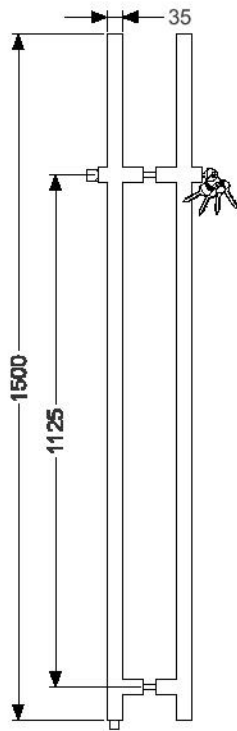
Ordering Code : XL - C 3004A

Reference Code : 9127328

Note : Suitable upto door thickness of 35 mm

Pull Handle

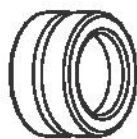
Lockable Pull Handle



Ordering Code : XL - C LH 3024
Reference Code : 9127331

DORMA Pull handle
TGDI Lockable 1500 x 35 mm
Center to Center - 1125 mm
Length - 1500 mm, Diameter - 35 mm
SS304 Grade
SSS Finish

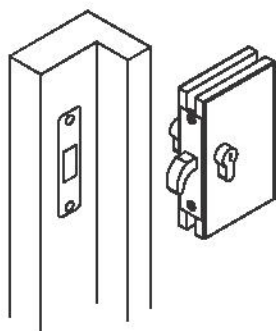
**Lockable
Pull Handle**



Circular Flush Pull
Satin Finish
Outer Dia 70mm
Hole Dia 50mm

Ordering Code : XL - C 7018

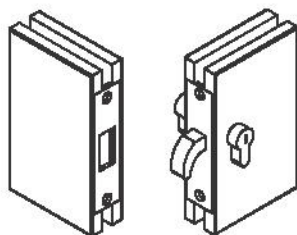
Reference Code : 9138056



Hook Lock for Glass Sliding
Glass to Wall or Wood

Ordering Code : XL - C 7019

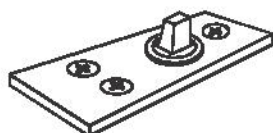
Reference Code : 9138057



Hook Lock for Glass Sliding
Glass to Glass with Strike box

Ordering Code : XL - C 7121

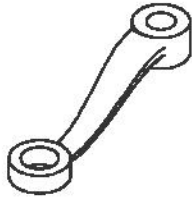
Reference Code : 9138059



Floor Pivot Bearing

Ordering Code : XL - C 4015A

Reference Code : 9137574

Spiders**1 Arm Non Fin Type Spider**

Ordering Code : XL - C 6026

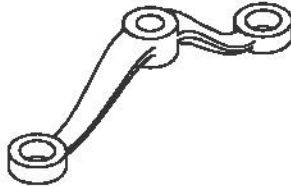
Reference Code : 9140777

Finish : Electro Polished

Material : SS 316

Maximum Facade Thickness : 15 mm

This fitting is recommended for a height up to 6000 mm only. For any further technical advice, please write to rajesh.ohri@dormakaba.com

2 Arm 180° Non Fin Type Spider

Ordering Code : XL - C 6027

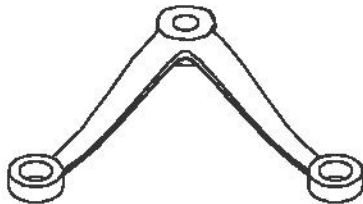
Reference Code : 9140778

Finish : Electro Polished

Material : SS 316

Maximum Facade Thickness : 15 mm

This fitting is recommended for a height up to 6000 mm only. For any further technical advice, please write to rajesh.ohri@dormakaba.com

2 Arm 90° Non Fin Type Spider

Ordering Code : XL - C 6028

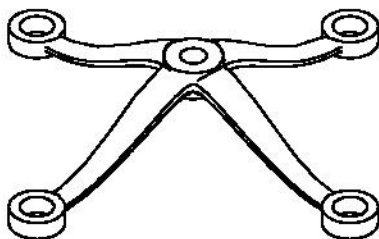
Reference Code : 9140779

Finish : Electro Polished

Material : SS 316

Maximum Facade Thickness : 15 mm

This fitting is recommended for a height up to 6000 mm only. For any further technical advice, please write to rajesh.ohri@dormakaba.com

4 Arm Non Fin Type Spider

Ordering Code : XL - C 6029

Reference Code : 9140780

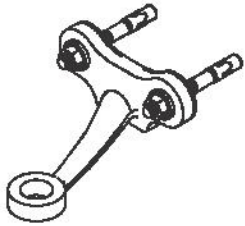
Finish : Electro Polished

Material : SS 316

Maximum Facade Thickness : 15 mm

This fitting is recommended for a height up to 6000 mm only. For any further technical advice, please write to rajesh.ohri@dormakaba.com

1 Arm Fin Type Spider



Application : Facade to wall

Ordering Code : XL - C 6030

Reference Code : 9140764

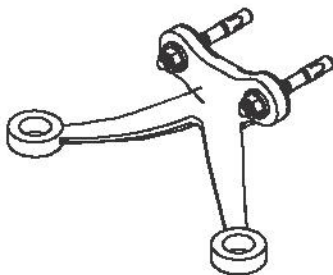
Finish : Electro Polished

Material : SS 316

Maximum Facade Thickness : 15 mm

This fitting is recommended for a height up to 6000 mm only. For any further technical advice, please write to rajesh.ohri@dormakaba.com

2 Arm 90° Fin Type Spider



Application : Facade to wall

Ordering Code : XL - C 6031

Reference Code : 9140765

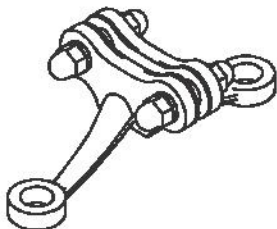
Finish : Electro Polished

Material : SS 316

Maximum Facade Thickness : 15 mm

This fitting is recommended for a height up to 6000 mm only. For any further technical advice, please write to rajesh.ohri@dormakaba.com

2 Arm 180° Fin Type Spider



Application : Fin to Façade

Ordering Code : XL - C 6032

Reference Code : 9140766

Finish : Electro Polished

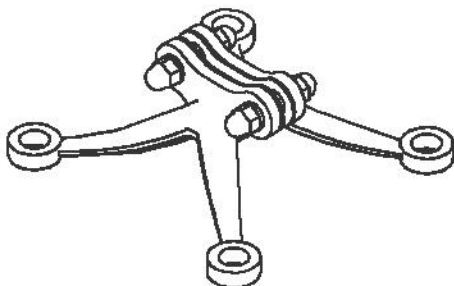
Material : SS 316

Maximum Facade Thickness : 15 mm

Maximum Fin Thickness : 19.52 mm

This fitting is recommended for a height up to 6000 mm only. For any further technical advice, please write to rajesh.ohri@dormakaba.com

4 Arm Fin Type Spider



Application : Fin to Façade

Ordering Code : XL - C 6033

Reference Code : 9140767

Finish : Electro Polished

Material : SS 316

Maximum Facade Thickness : 15 mm

Maximum Fin Thickness : 19.52 mm

This fitting is recommended for a height up to 6000 mm only. For any further technical advice, please write to rajesh.ohri@dormakaba.com

Spiders

Splice Plate



Application : Splice Plate

Ordering Code : XL - C 6034

Reference Code : 9140770

Size : 300 mm x 50 mm x 8 mm

Finish : Polished

Material : SS 316

Max. Fin Thickness : 19.52 mm

Max. Fin Width : 400 mm

This fitting is recommended for a height up to 6000 mm only. For any further technical advice, please write to rajesh.ohri@dormakaba.com

Fixed Bolt



Ordering Code : XL - C 6035

Reference Code : 9140771

Finish : Electro Polished

Material : SS 316

Max. Facade Thickness : 15 mm

This fitting is recommended for a height up to 6000 mm only. For any further technical advice, please write to rajesh.ohri@dormakaba.com

Articulated Bolt



Ordering Code : XL - C 6036

Reference Code : 9140772

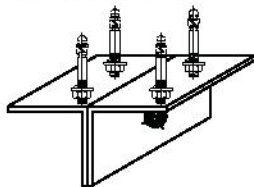
Finish : Electro Polished

Material : SS 316

Max. Facade Thickness : 15 mm

This fitting is recommended for a height up to 6000 mm only. For any further technical advice, please write to rajesh.ohri@dormakaba.com

Facade Bracket



Ordering Code : XL - C 6037

Reference Code : 9140768

Size : 150 mm x 100 mm x 8 mm (Pair)

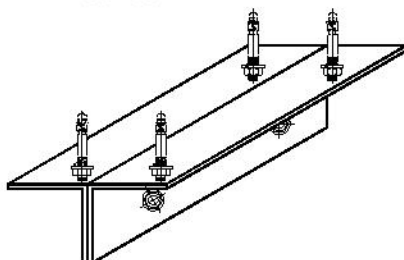
Finish : NiCr Plated

Material : MS/NiCr

Max. Facade Thickness : 15 mm

This fitting is recommended for a height up to 6000 mm only. For any further technical advice, please write to rajesh.ohri@dormakaba.com

Fin Bracket



Ordering Code : XL - C 6038

Reference Code : 9140769

Size : 350 mm x 100 mm x 10 mm (Pair)

Finish : NiCr Plated

Material : MS/NiCr

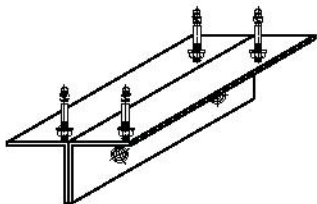
Max. Fin Thickness : 19.52 mm

This fitting is recommended for a height up to 6000 mm only. For any further technical advice, please write to rajesh.ohri@dormakaba.com

Spiders

DORMA XL - C®

Fin Bracket



Ordering Code : XL - C 6039

Reference Code : 9140013

Size : 300 mm x 100 mm x 8 mm (Pair)

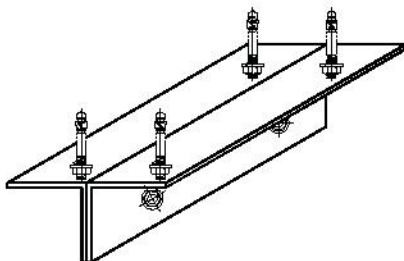
Finish : NiCr Plated

Material : MS/NiCr

Max. Fin Thickness :19.52 mm

This fitting is recommended for a height up to 6000 mm only. For any further technical advice, please write to rajesh.ohri@dormakaba.com

Fin Bracket



Ordering Code : XL - C 6040

Reference Code : 9140014

Size : 400 mm x 100 mm x 8 mm (Pair)

Finish : NiCr Plated

Material : MS/NiCr

Max. Fin Thickness :19.52 mm

This fitting is recommended for a height up to 6000 mm only. For any further technical advice, please write to rajesh.ohri@dormakaba.com

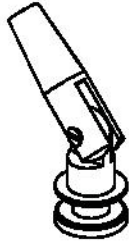
Spiders

Canopy Fittings

Single Point Canopy System to Glass



Glass to Glass Bottom Connector



Glass to Glass Connector



Glass Top Connector

Application :
Canopy System to Glass / Glass without Rod

Ordering Code : XL - C 9143

Reference Code : 9140062

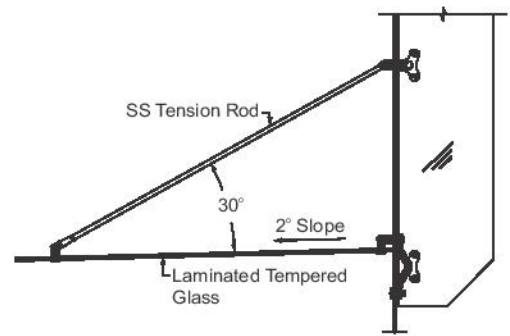
Finish : SS Finish

Material : SS316

Canopy Glass Thickness : 13.52 mm

Maximum Glass Panel Size : 1400 x 1400 mm

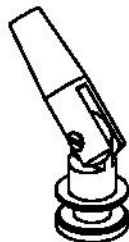
Note : Tension Rod are available based on Site Dimensions



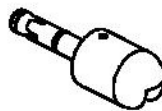
Single Point Canopy System to Wall



Glass to Wall Bottom Connector



Glass Connector



Wall Top Connector

Application :
Canopy System to Glass / Wall without Rod

Ordering Code : XL - C 9144

Reference Code : 9140063

Finish : SS Finish

Material : SS316

Canopy Glass Thickness : 13.52 mm

Maximum Glass Panel Size : 1400 x 1400 mm

Note : Tension Rod are available based on Site Dimensions

